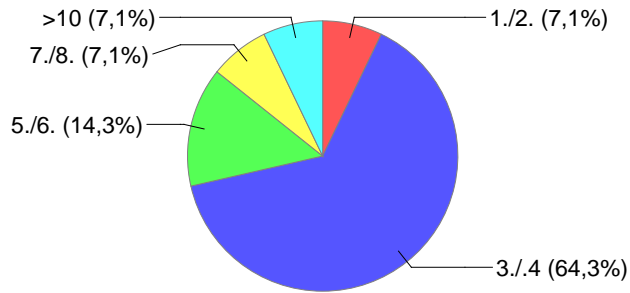


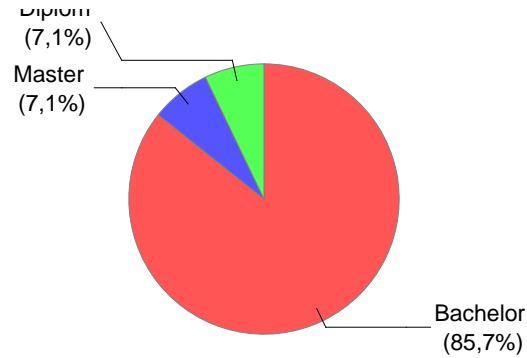
# Vorlesung

# Sequenzanalyse I (Wittler)

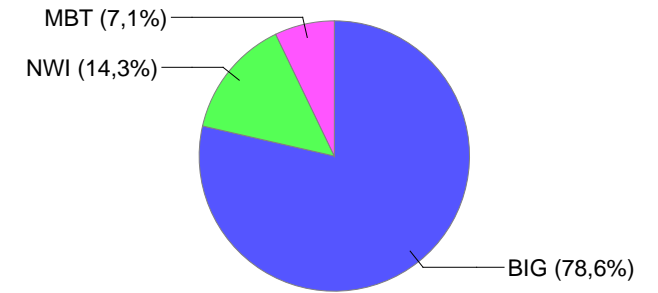
### Fachsemester



### Art des Studiengangs

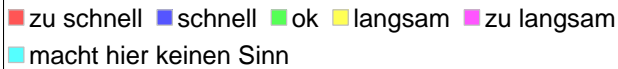
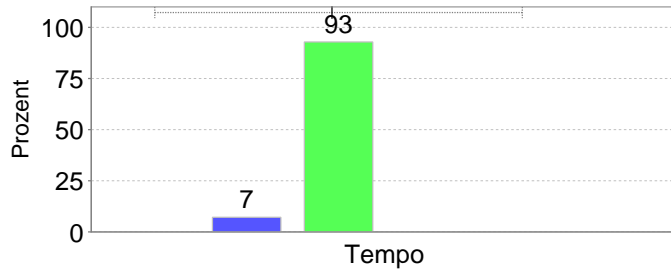


### Studiengang

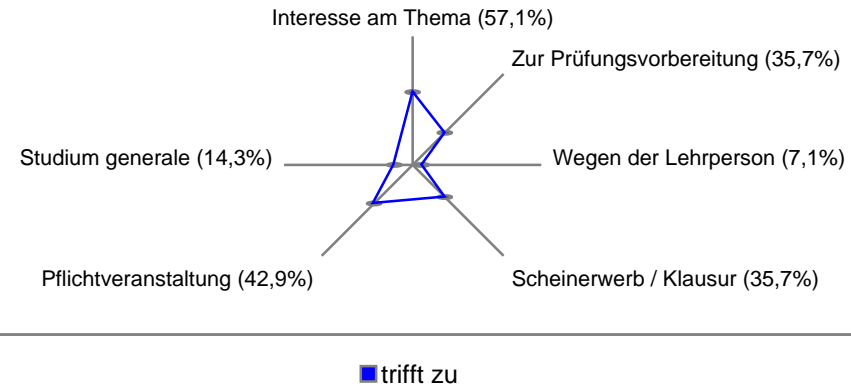


### Tempo

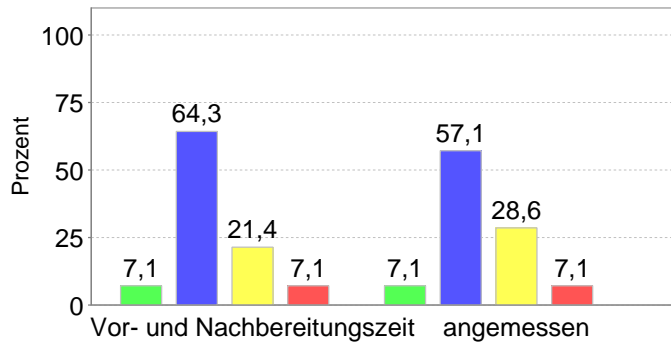
Mittelwert: 2,9



### Veranstaltung wird besucht, weil

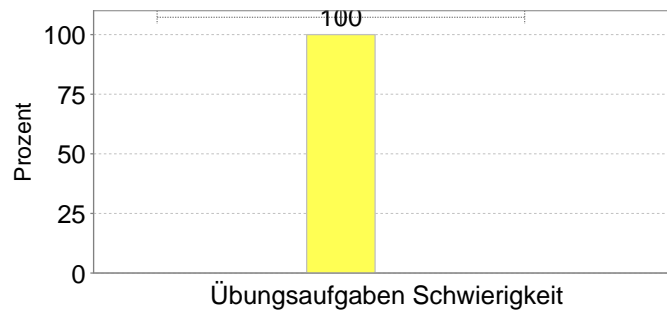


### Vor- und Nachbereitungszeit

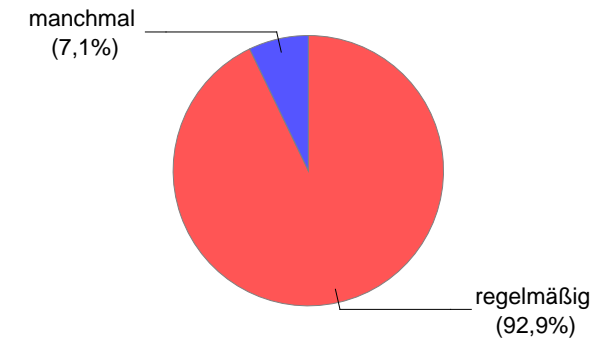


### Übungsaufgaben Schwierigkeit

Mittelwert: 3



### Übungsaufgaben bearbeitet



## Gefehlt, weil

